



# FIELD system

## FIELD system CNC Edit Log



### DESCRIPTION

FIELD system CNC Edit Log is an application that allows logging and utilisation of the CNC program edit history for machines based on FANUC CNCs.

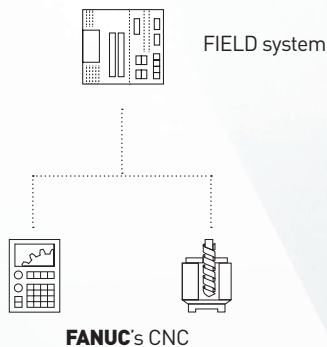
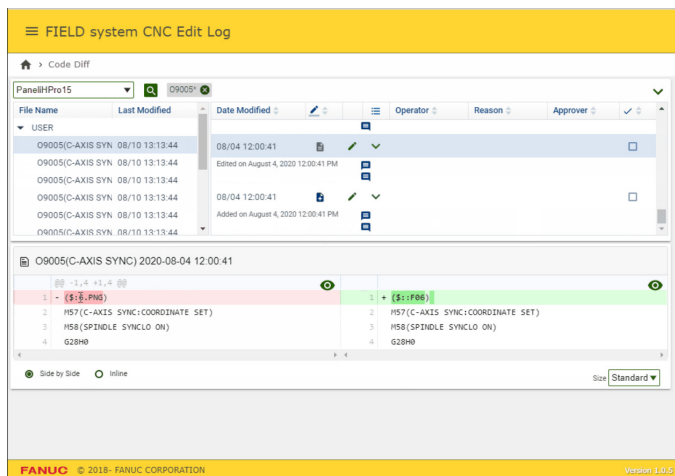
### KEY BENEFITS

- Minimise risk of production loss caused by unintended program modification
- Quickly revert previous version of program in case of wrong modification
- Improve communication between machine operator and production supervisor
- Monitor production program changes

### KEY FEATURES

- Identify users, approvers, editing reasons and editing errors
- Back-up programs every day
- Log and display edit history of CNC programs
- Log edit data such as who edited, what was edited, why and who approved
- Identify defect causes resulted from program change

### APP PREVIEW



WWW.FANUC.EU