

Unbeatable versatility

New ROBODRILL α -D28LiB5ADV Plus Y500



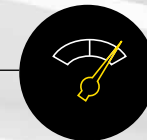
**SUPER FAST
TOOL CHANGER –
0,7 SEC
TOOL TO TOOL**



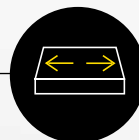
**EXTENDED
Y-AXIS STROKE
TO 500 MM**



**INCREASED TOOL
CAPACITY TO 28 TOOLS
(46 KG MAX. WEIGHT
CAPACITY)**



**IMPROVED Z-AXIS
ACCELERATION AND
RAPID TRAVERSE**



**INCREASED
TABLE SIZE
850 X 500 MM**



Designed for ultimate performance

- Designed to cover a wider range of machining tasks involving large workpieces, such as EV parts
- Maximum flexibility given by an extended Y-axis stroke (500 mm) and an increased table size
- Reduced drilling and tapping applications cycle time thanks to a greater Z-axis acceleration (2.2 G) and traverse rate (60m/min)
- Suitable for an even wider range of applications due to the increased tool capacity to 28 tools, while keeping the super-fast tool changing time
- Ergonomically designed work area
- Optimal acceleration and deceleration control for increased efficiency

WWW.FANUC.EU